

CHARACTERISTICS

NOMINAL IMPEDANCE	50	Ω
FREQUENCY RANGE	0-4	GHz
TEMPERATURE RATING	-65/+165	°C
VSWR	1.3	Max
RF INSERTION LOSS	.115	dB Maxi
VOLTAGE RATING	500	Vrms Maxi
DIELECTRIC WITHSTANDING VOLTAGE	1500	Vrms mini
INSULATION RESISTANCE	5000	MΩ mini
HERMETIC SEAL	NA	cc/s Atm.cm3/s
LEAKAGE (pressurized only)	NA	psi MPa
-	-	-
-	-	-

STANDARDISATION

CABLE RETENTION	40.765	Lb mini 181 N
CENTER CONTACT RETENTION		
Axial force - mating end	NA	Lb mini N
Axial force - opposite end	NA	Lb mini N
Torque (Min)	NA	Inch.oz cm.N
RECOMMENDED TORQUES		
Mating	NA	Inch.Lb cm.N
Panel nut	NA	Inch.Lb cm.N
Clamp nut	13.29	Inch.Lb 150 cm.N

CONSTRUCTION

CONNECTOR PARTS	MATERIALS	FINISH
BODY	BRASS	NICKEL
OUTER CONTACT	BRASS	NICKEL
CENTER CONTACT	BRASS	GOLD
INSULATORS	PTFE	-
-	-	-
-	-	-
-	-	-
-	-	-
-	-	-

ISSUE	REVISION No	DESCRIPTION	BY	DATE
.
.
.
.

Initiated on 24-OCT-90

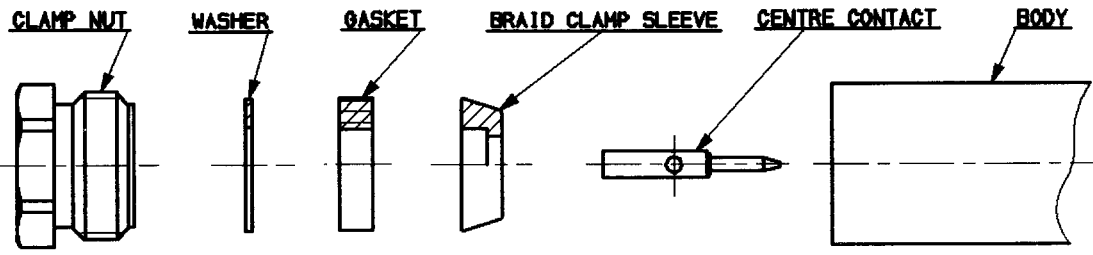
The information given here is subject to change without notice. Design changes may be in order to improve the product.



Superseded on

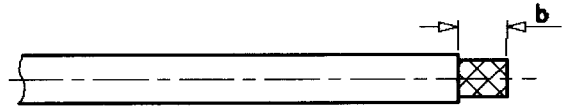
STRAIGHT FLANGE PLUG

CABLE 5/50 STR



①

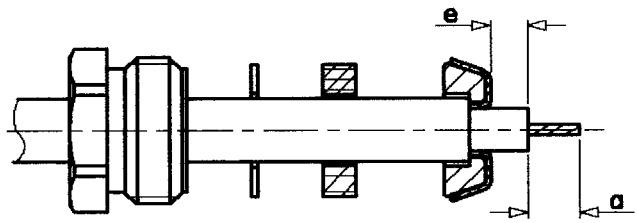
1-1 Strip the cable .



Stripping	a	b	c	d	e
Inch	.098	.276	-	-	.118
mm	2.5	7	-	-	3

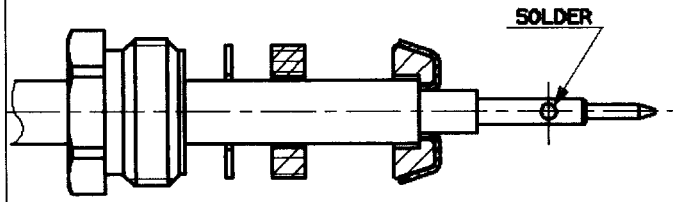
②

- 2-1 Slide the clamp nut, the washer and the gasket onto the cable .
- 2-2 Slide clamp braid sleeve over braid .
- 2-3 Fold back braid and trim off surplus braid .
- 2-4 Trim back dielectric as shown .



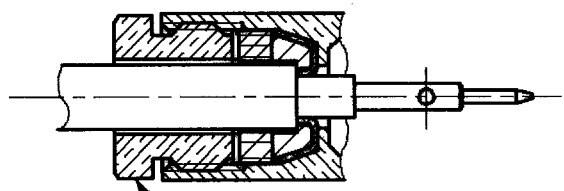
③

3-1 Solder the cable inner conductor into centre contact .



④

4-1 Screw sub-assembly into the connector body .
Recommended coupling torque
13.35 in. lb



ISSUE	REVISION No	DESCRIPTION	BY	DATE
.
.
.

Initiated on 24-OCT-90

The Information given here is subject to change without notice. Design changes may be in order to improve the product.



Superseded on -----